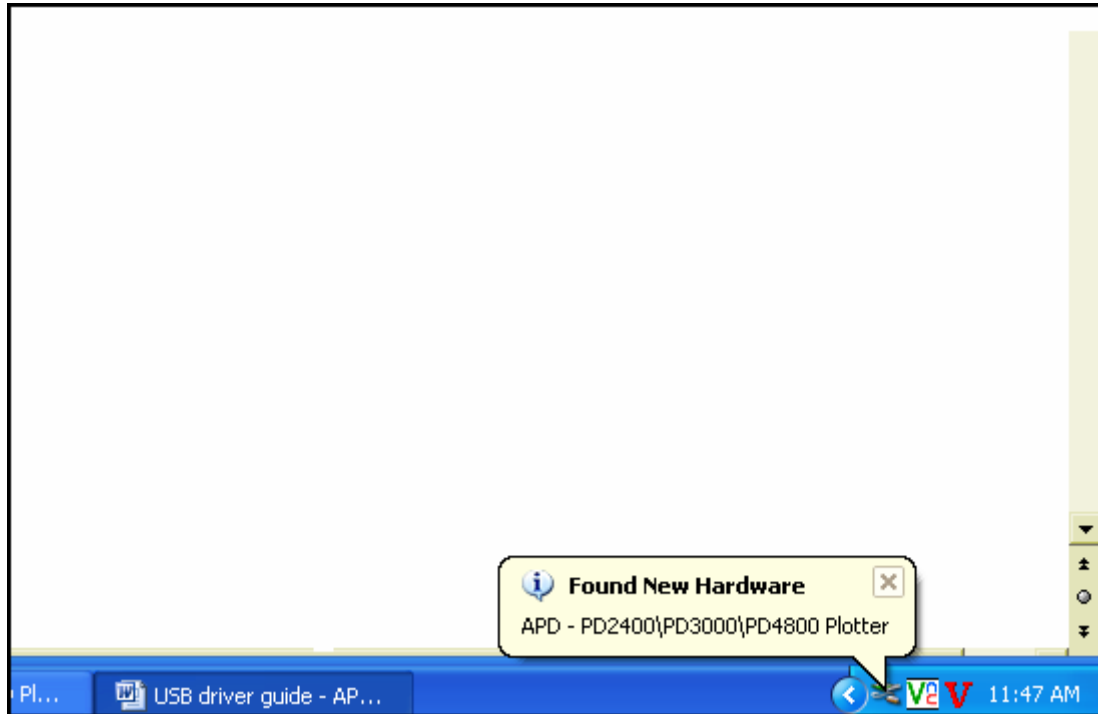


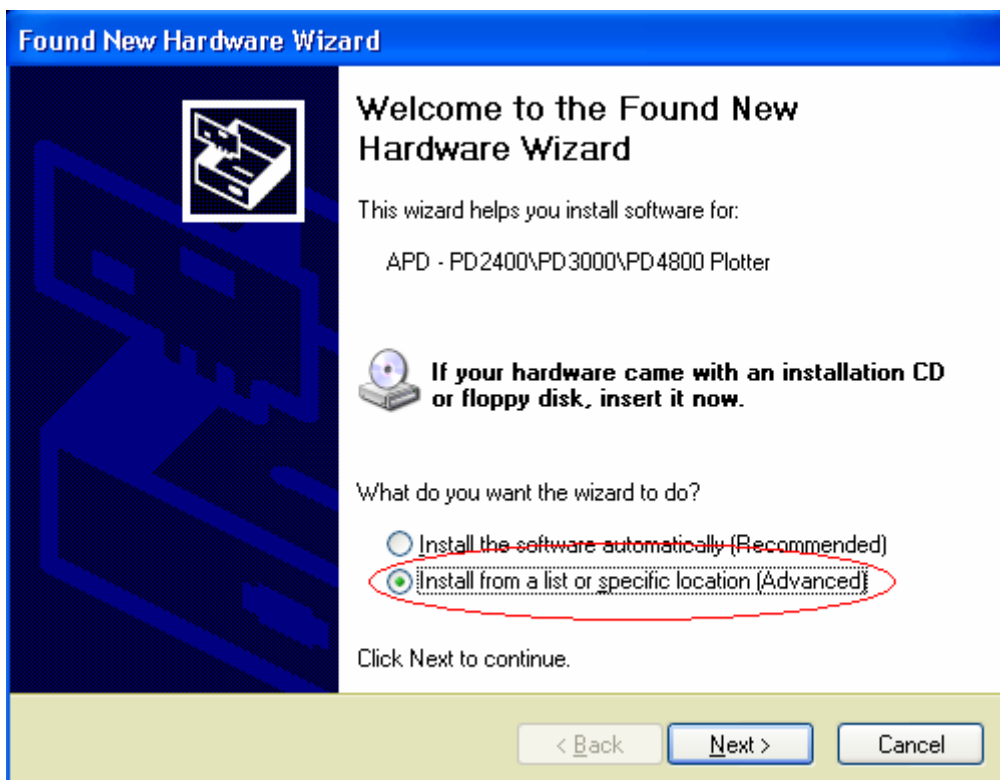
ADVANCED PLOTTING DEVICES, LLC

Install USB driver for APD plotter on WindowsXP:

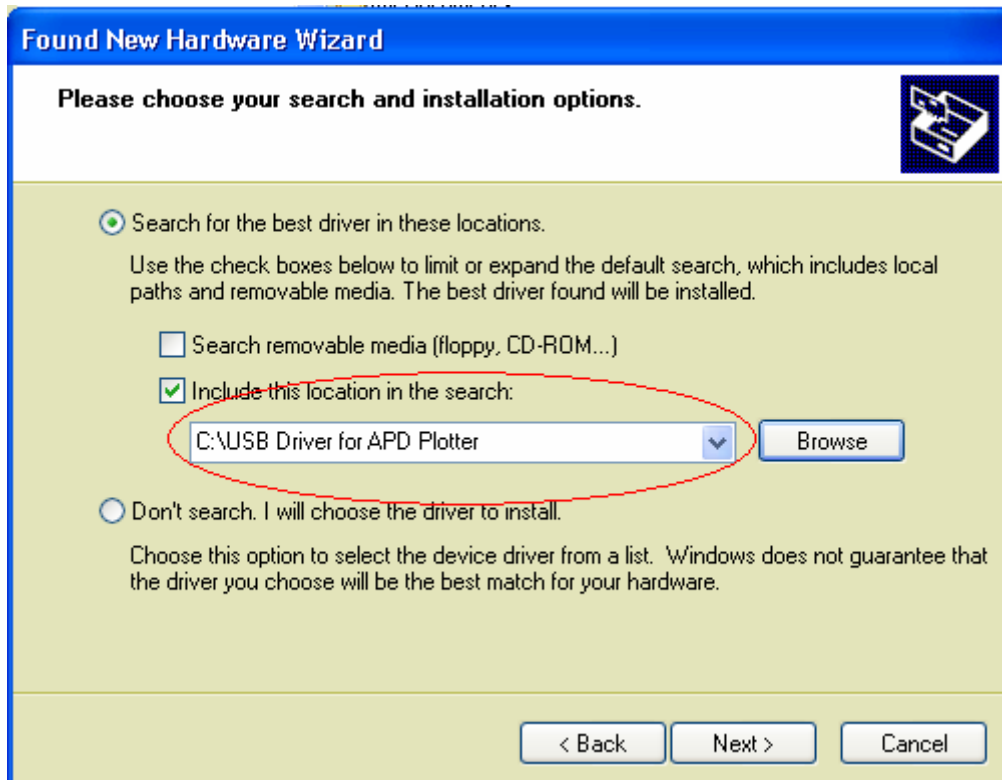
After plotter was plugged to PC, Windows XP will detect it like this.



Click on ***“Install from a list or specific location”*** and click ***“Next”***:



Browse to the APD driver's directory:



After that, Windows will install the driver for this plotter and make sure you press **“Continue Anyway”** as follow:



Click on **“Finish”**:

